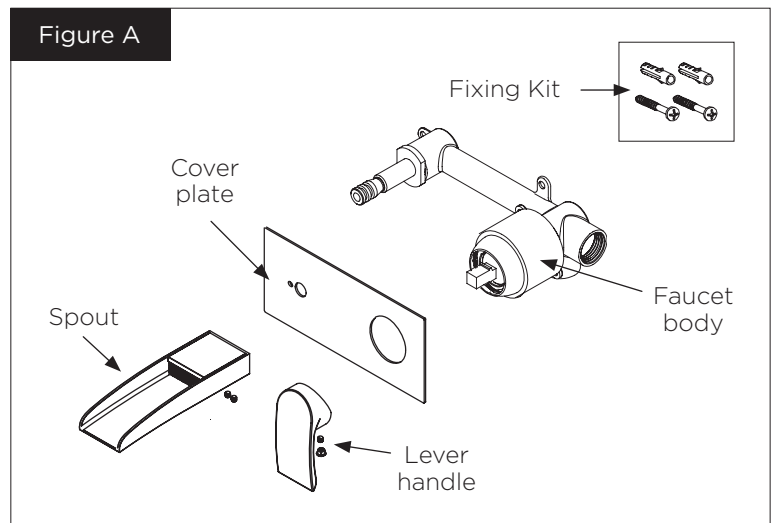


**IMPORTANT - PLEASE READ**

The model supplied may vary from the image shown. Please note that the general installation process for all wall mounted taps are the same and the following guide will take you through the process.

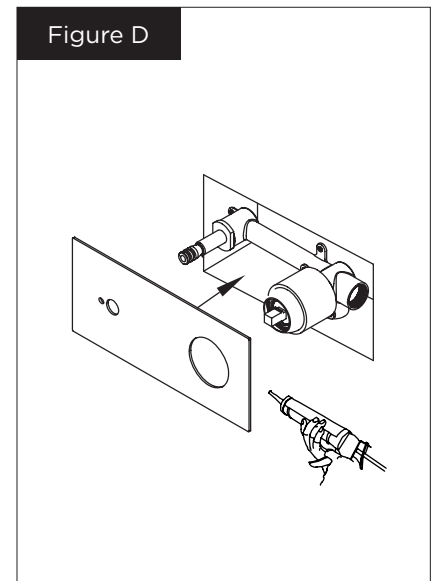
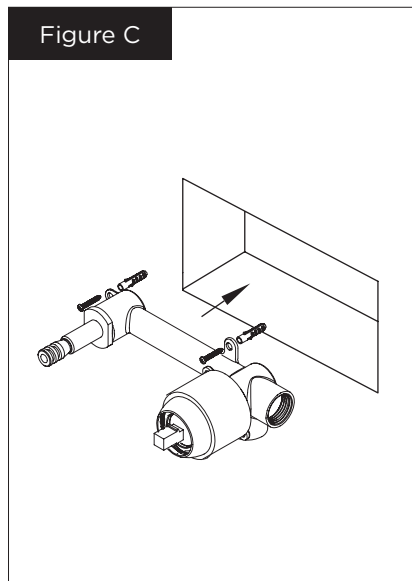
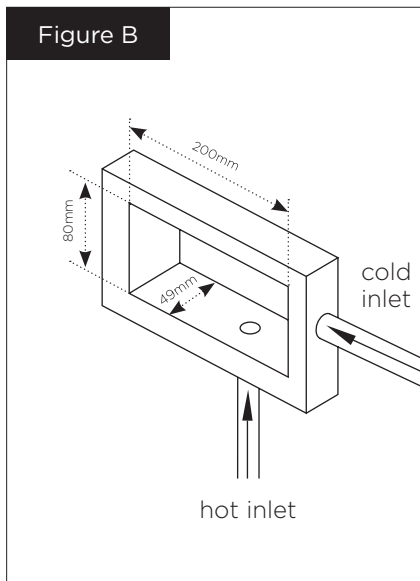
Before installation identify all components and inspect the product for any damage. A claim will not be accepted if an obvious defect is found after installation.

If you are unsure of any part of the instructions in this document then we recommend that you contact a reputable qualified trades person.



**INSTALLATION**

1) Prior to installation, flush out the pipework. Turn off the water supply before commencing installation.



2) Determine the fixing position and prepare recess for the faucet body. Make the recess in the wall according to the dimension of the faucet body, the recess should be approximately 200mm x 49mm. The faucet body should be fitted below the finished surface to allow the cover plate to fit correctly and flush against the wall. [ B ]

3) Position the faucet body in place and mark through the pre-drilled screw holes on the body, then drill the marked points before inserting wall plugs into the wall holes. [ C ]

4) Connect the cold water inlet and hot water inlet correctly. If in any doubt please consult with a qualified trades person.

5) Hold faucet body in place and secure to the wall with supplied fixings.

6) Once the faucet body has been fitted correctly, ensure all connections are watertight.

7) Secure the cover plate onto the faucet body by applying clear silicone sealant around the back edge of the cover plate and carefully pressing into position until it is flush with the wall/tiles. [ D ]

8) Fit the spout and handle in their correct positions as shown in diagram [ E ]. Hold the spout and handle in position, screw and tighten until secure.

9) Finally, turn on water supply and allow to run for a few minutes to flush out the piping system thoroughly.

Figure E

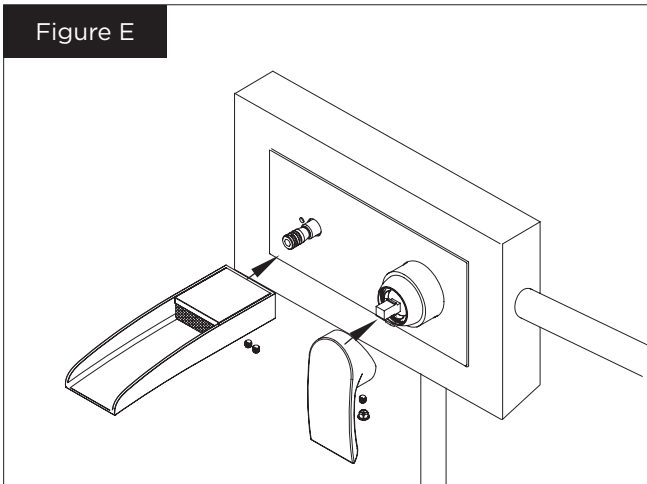
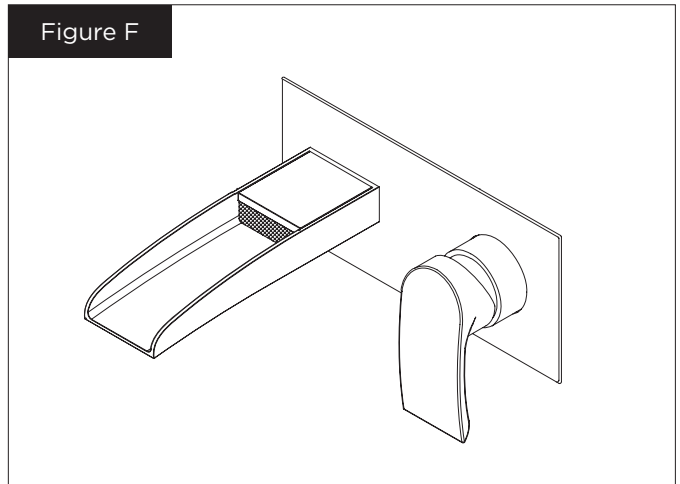


Figure F



## Guarantee

The Lifetime Guarantee is only valid to customers who complete and submit the online Niagara® Guarantee Registration Form within 30 days of installation. Please note that products with finishes other than Chrome are guaranteed for 3 years only, these products must also be registered online to activate the 3 Year Guarantee.

To register and activate your Guarantee please visit [www.niagarabathrooms.co.uk](http://www.niagarabathrooms.co.uk)

## Aftercare

During installation, extra care must be taken to avoid damaging the fitting or its finish.

To maintain the appearance of the fitting, please ensure it is cleaned regularly using a clean soft damp cloth only. Do not use abrasive sponges, scouring agents, organic solvents or acidic cleaners as they may cause surface deterioration.