

Features:

- AISI 316L INOX Stainless Steel Cylinder
Treated using our pickling & passivation process which increases corrosion resistance 5x more than a standard stainless cylinder!
- Works with Heat Pumps, Solar, Biomass/Gas/Oil & Electric Boilers
- Slimline - Only 550mm diameter
- Tested in accordance with EN12897
- Extremely fast reheat recovery time due to the superior 32mm stainless coils
- Solar Thermal and PV Diverter compatible
- High density insulation = Low heat loss
- High performance at low water pressures
- Easy access service hatch at the front for internal cleaning & maintenance
- Supplementary electric heating element (3000W)
- Adjustable Levelling feet
- Carry handles for easy transport & installation
- Seamless low temperature plasma welding
- Optional Electronic Anode Protection with led status
- Optional Additional 3kW Element
- Compliant with G3, KIWA Watertec, KIWA Building regulations and CE approved
- G3 Kit Included - (Expansion Vessel, Combi Valve & Tundish)
- 25 year warranty
see warranty terms and conditions

Easy inspection. Low maintenance.

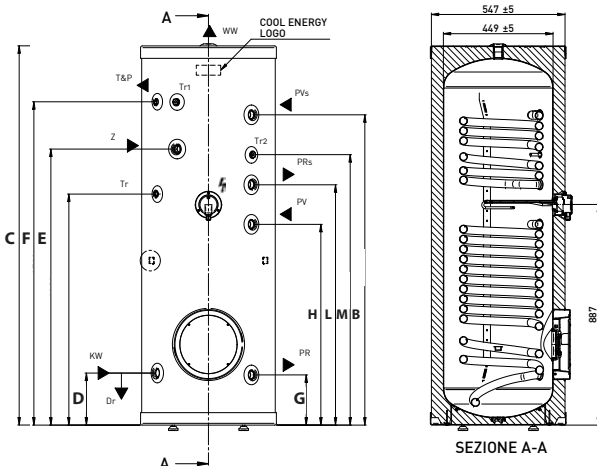
Unique to all the cylinders is the large inspection/service hatch. Cleaning and flushing of limescale deposits couldn't be easier. By removing a single nut, the entire inspection hatch is removed to give access to the inner tank.



Invented Hot Water



	200L. D/C	250L. D/C	300L. D/C
CYLINDER			
Tested in accordance with	EN 12897:2006	EN 12897:2006	EN 12897:2006
Maximum design pressure (bar)	10	10	10
Normal operating pressure (bar)	3	3	3
Pressure reducing valve set pressure bar (bar)	3	3	3
Cylinder T&P (°C/bar)	90/7	90/7	90/7
Combination valve (bar)	6	6	6
PRV maximum supply pressure (bar)	12	12	12
Expansion vessel pre-charge pressure (bar)	3	3	3
Maximum operating pressure of expansion vessel (bar)	10	10	10
CYLINDER LOWER INDIRECT COIL			
Surface area (m ²)	1.3	1.5	1.5
Maximum supply pressure (bar)	10	10	10
Primary heating power input (kW)	28.63	26.82	27.36
Rating @50°C (litres)	190.3	234	272
Primary flow rate (m ³ /h)	0.9	0.9	0.9
Pressure drop through coil @0.9 m ³ /h (mbar)	15	18	18
Maximum temperature (°C)	95	95	95
Reheat time (min)	30.43	37	41.19
CYLINDER UPPER INDIRECT COIL			
Surface area (m ²)	0.6	0.6	0.6
Maximum supply pressure (bar)	10	10	10
Primary heating power input (kW)	15.91	15.23	14.47
Rating @50°C (litres)	75.7	106	155.5
Primary flow rate (m ³ /h)	0.9	0.9	0.9
Pressure drop through coil @0.9 m ³ /h (mbar)	8	8	8
Maximum temperature (°C)	95	95	95
Reheat time (min)	24.49	32.1	43.27
ELECTRIC SUPPLY			
Electrical supply (V)	240	240	240
Amp (A)	12.5	12.5	12.5
Electric protection	IP24	IP24	IP24
Electric heater rating (kW)	3	3	3
Electric heater type	Single Phase	Single Phase	Single Phase
INSULATION			
Heat loss @65°C (kW/24hr)	1.97	2.26	2.55



Model	Weight empty kg	Weight full kg
200L. D/C	48	241
250L. D/C	57	295
300L. D/C	69.5	356.4

Model	Part no.	Capacity Litres	Dimensions mm										
			ø A	B	C	D	E	F	G	H	L	M	
200L. D/C	CE-INOX 200DC	193	550	1247	1524	208	1109	1299	202	887	1087	1207	
250L. D/C	CE-INOX 250DC	238	550	1367	1784	208	1227	1559	221	886	1086	1206	
300L. D/C	CE-INOX 300DC	286.9	550	1366	2094	208	1426	1868	201	807	1087	1087	

Connection

Code	Description	Size	Code	Size	
CW	Cold Water Inlet	1"	Z	Secondary Return	3/4"
DHW	Domestic Hot Water Outlet	1"	T&P	Temperature and Pressure Valve	1/2"
F1	Lower Coil Flow (Solar)	1"	Tr	Stat Pocket	1/2"
R1	Lower Coil Return (Solar)	1"	Tr1	Stat Pocket	1/2"
F2	Upper Coil Flow (Auxiliary)	1"	Tr2	Stat Pocket	1/2"
R2	Upper Coil Return (Auxiliary)	1"			

